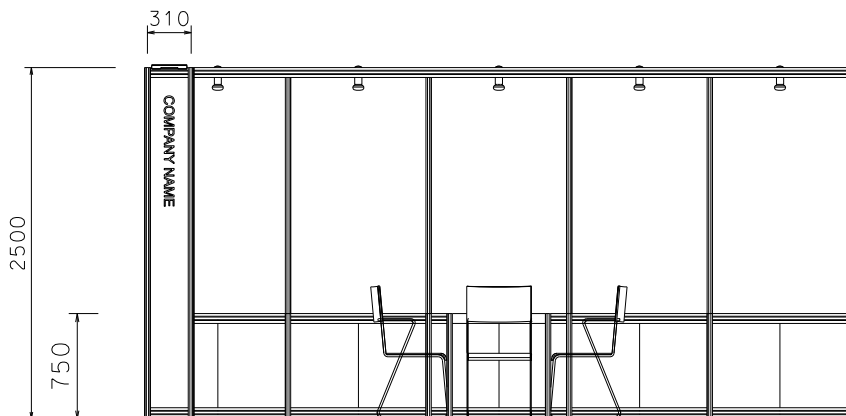
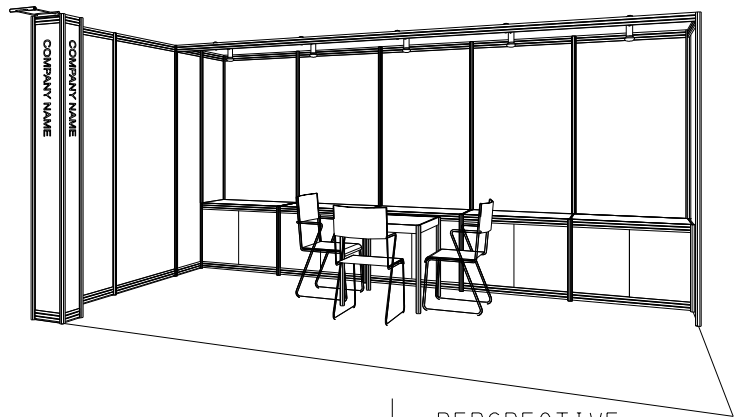
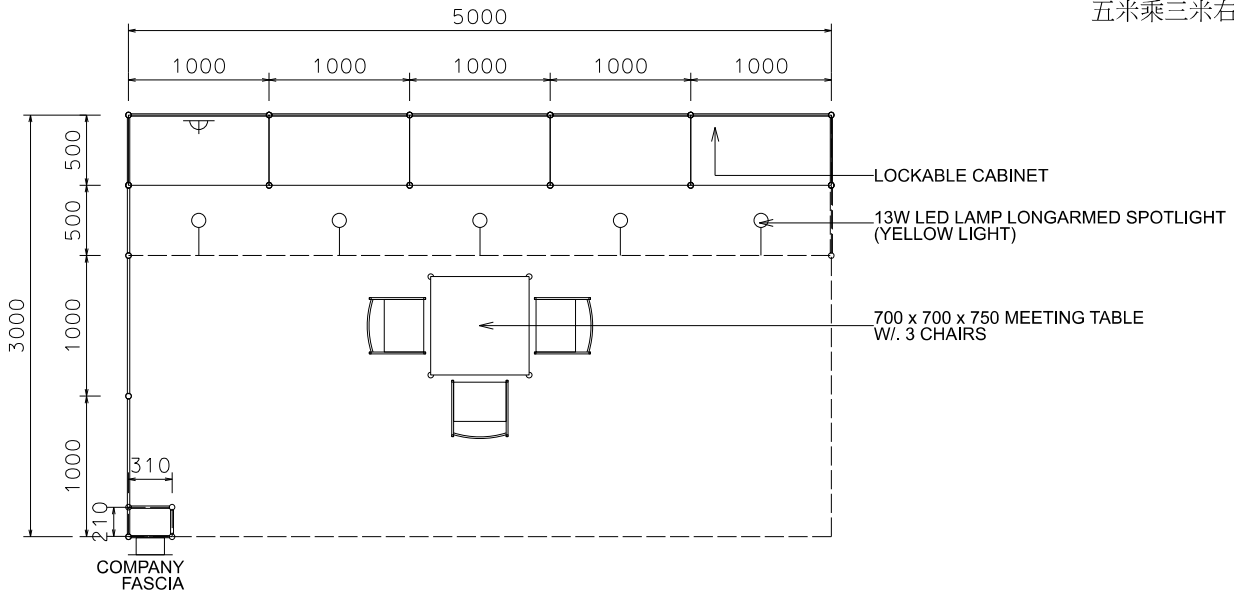




### 5x3 Right Corner Open Booth

五米乘三米右邊角位展台



BOOTH SPECIFICATIONS		QTY.
	1000W x 500D x 750H LOCKABLE CABINET	5
	700W x 700D x 750H MEETING TABLE	1
	BLACK LEATHER CHAIR	3
	24W LED GILBERT LAMP	1
	13W LED LAMP LONGARMED SPOTLIGHT (YELLOW LIGHT)	5
	500W SOCKET	1
	H70mm CEILING BEAM	5M
	RUBBISH BIN & CARPET (15sqm.)	

\*The Hong Kong Trade Development Council reserves the right to change the configuration if necessary.

\*如有需要，香港貿易發展局有權更改展台結構。